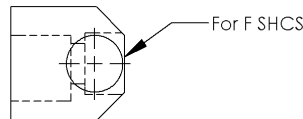
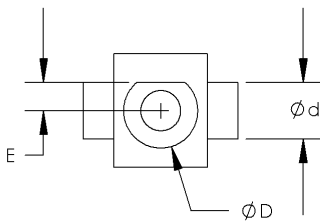
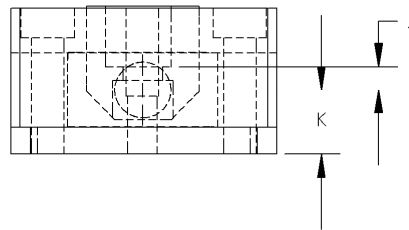
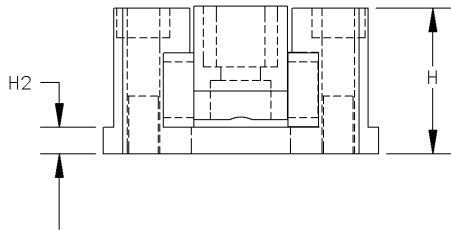
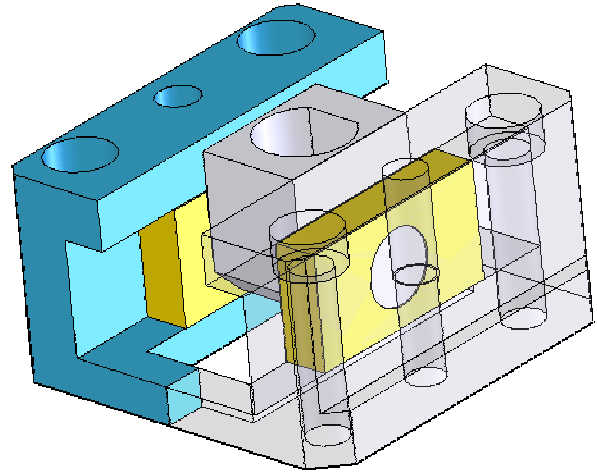
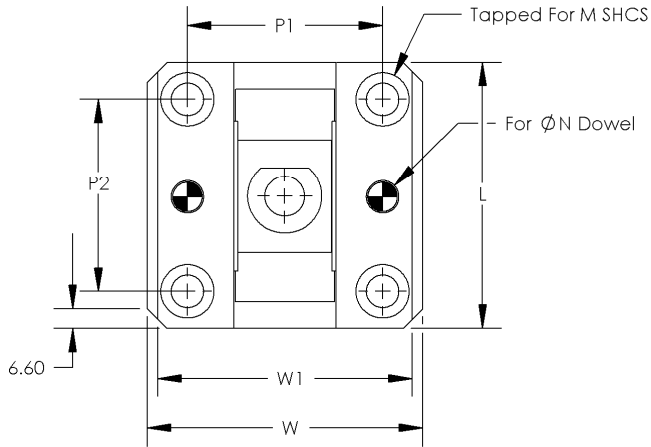


- Saves Build Time!
- Accommodates lifter rod angles of up to 30 degrees
- Standard with graphite



**Materials:** Trunnion and Base: 4140 Rc 30; Bearing Block: Aluminum Bronze w/Graphite Plugs.

**Tolerances:** L, W, H: +0/-0.13; Mounting Holes: +/-0.13; Dowel Holes: +/-0.025; All Other: +/-0.25

Lifter Rod			Base												
D	E	F	d	L	W	W1	H	H2	P1	P2	M	N	J	K	
12	4.8	M6	12.7	50	57	51	33	9.5	39	35	M6	M6	7.3	16.2	
20	8.0	M10	15.9	80	80	72	43	11	56	55	M8	M8	6.1	20.3	
25	11.2	M12	19.0	90	93	85	50	15	66	65	M10	M10	7.9	21.7	

Catalog Number: KOCU - SL 25

